

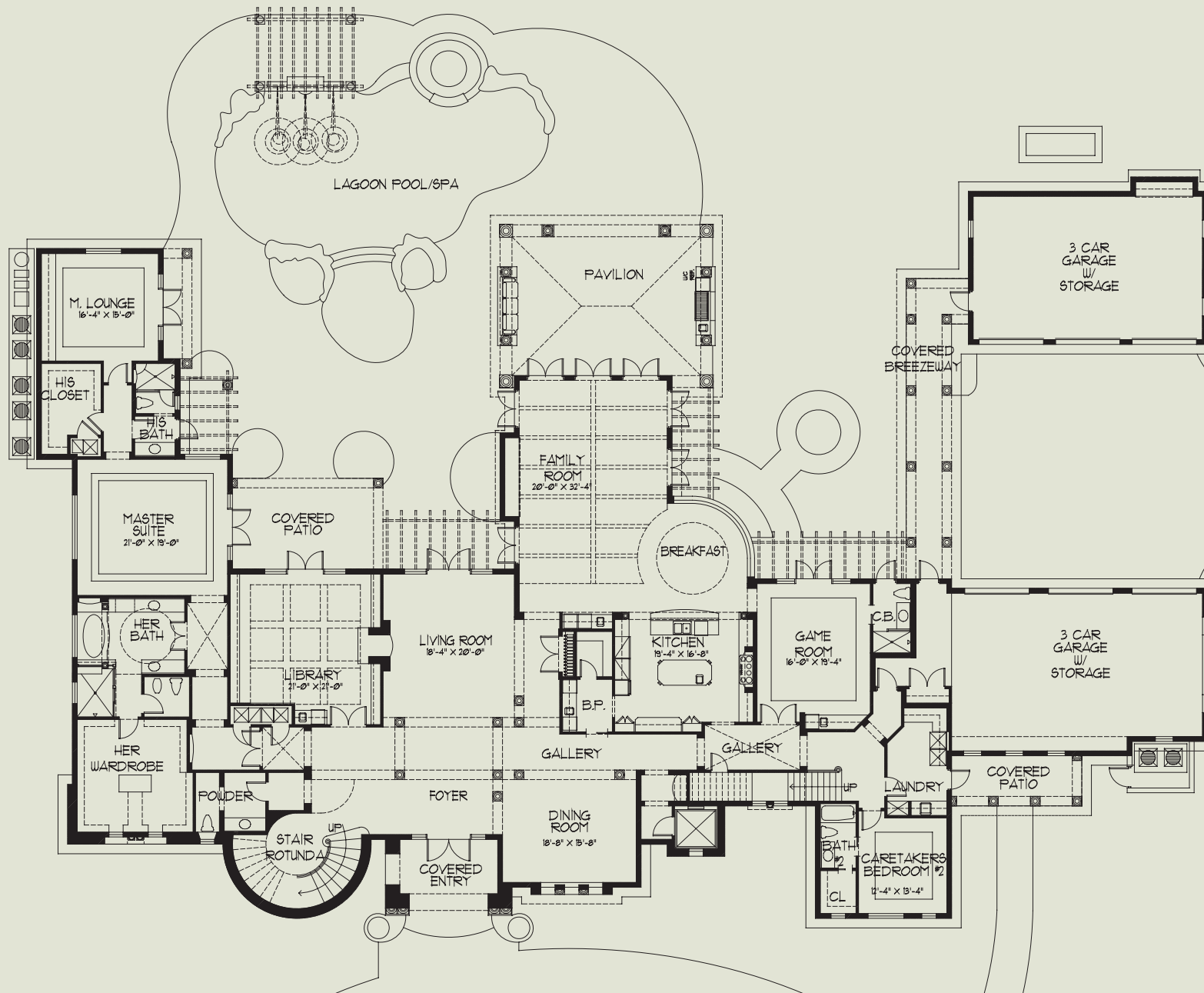
1

SNAPPER CREEK  
ITALIAN PALAZZO

10101 LAKESIDE DRIVE  
CORAL GABLES, FLORIDA

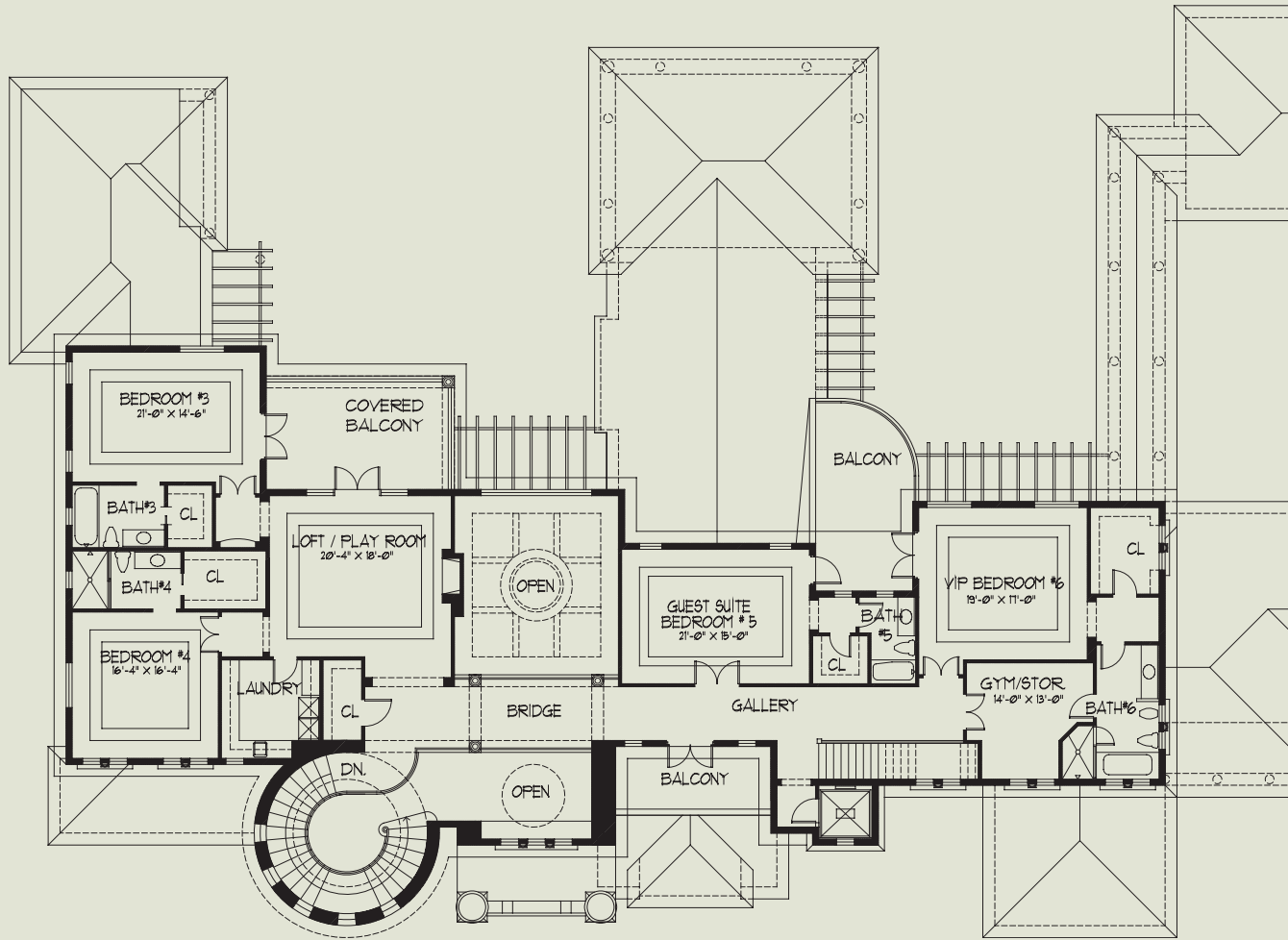


FIRST LEVEL



Hollub Homes reserves the right to change or modify all plans, specifications, features, colors and prices without notice. All plans and elevation renderings are shown as artists' conceptions and are not to scale. Square footage and sizes are approximate. Purchaser will pay at closing all recording fees, documentary stamps, and title insurance in addition to purchase price.

## SECOND LEVEL



Building the ultimate in South Florida luxury for over 50 years, award winning Hollub Homes presents its Snapper Creek Italian Palazzo.

Set on 1.3 acres in exclusive Snapper Creek Lakes, this Mediterranean masterpiece captures purity of design amid old world splendor. Enter this 6 bedroom, 8.5 bath home through an impressive stone entrance that highlights hand-painted domed ceilings and custom marble and semi-precious stone mosaic inlays. Designed for elegant entertaining, the home has a formal living room with stone fireplace, dining room, panoramic family room with bar, game/ billiard room and morning area, all with extraordinary views of the mature landscape, stunning lagoon pool/spa/ fountains and trellis area with a stone arched colonnade. The state of art gourmet kitchen includes a walk-in pantry and fully equipped butler's pantry with wine storage.

The grand master suite includes a lounge/ exercise area, luxurious separate his-and-her custom marble baths, huge walk-in closets and a study. The second level features a loft/game room, 4 VIP suites, gym, second laundry, kitchenette and balconies with poolside views. The home has lavish appointments in rich woods, select marbles, granites and custom millwork throughout. Other amenities include an elevator, whole house generator and 6 car garage.

Consistent with the Hollub quality, this home exceeds Florida building code requirements. The home additionally has impact glass for hurricane protection and reinforced solid concrete block construction on the 1st and 2nd floors, including a poured and pre-cast concrete 2nd floor slab. The total square footage is 14,285, with a lot size of 55,320 sq. ft.

Honored as a Florida's Best Awards Winner since 1998 and most recently with Custom Home's 2007 Pacesetter Award, our family has helped set the standard for custom home building and renovations in South Florida for over 50 years. Each home is truly unique, featuring unparalleled custom designs, finishes, cabinetry and detail.

Our longstanding relationships with subcontractors (many over 30 years) provide unprecedented service and client satisfaction and incomparable quality and workmanship.

We look forward to showing you first-hand why Hollub Homes are indeed relationship built.

**HOLLUBHOMES**  
relationship built.®

9771 South Dixie Highway Miami, Florida 33156

305.665.4275 Toll free 866.898.3163

[hollubhomes.com](http://hollubhomes.com)

Custom Home's  
2007 Pacesetter  
Award Winner

Winner of BASF  
Builder's Overall  
Best of Show 2006



Winner of BASF  
Multi-Platinum  
Awards 2007